

# INTRAMarX<sup>®</sup> 3D

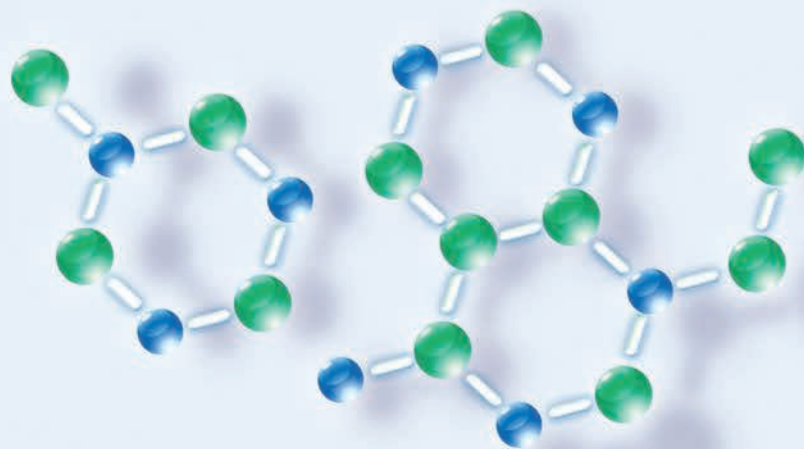
## Introducing the next generation of radiopaque markers...with improved visibility on X-ray

Safe and simple, new IntraMarX<sup>®</sup> 3D Radiopaque Markers are used in diagnostic tests that assist in the evaluation of colonic motility in patients with severe constipation.

IntraMarX<sup>®</sup> 3D can also be used for the diagnosis of many other GI conditions, including colonic inertia, bowel obstruction, hypomotility and outlet delay.

IntraMarX<sup>®</sup> 3D key features include:

- Improved visualization on X-ray—saving reading time
- Better resolution with lower exposure—improving accuracy



# INTRAMarX<sup>®</sup> 3D

The IntraMarX<sup>®</sup> Radiopaque capsules contain 24 rings that show up on X-ray. The capsule is swallowed by the patient under the direction of physician.

As the capsule moves through the digestive system, the shell will dissolve and the rings moves through the digestive tract.

Depending on the diagnostic method, a single X-ray scan of the abdomen will be taken to observe the location and quantity of the rings that are left in the abdomen.

The findings on X-ray will assist the physician in making the appropriate diagnosis.

Compared to other radiopaque markers, IntraMarX<sup>®</sup> 3D markers are distinguishable from all view angles by X-ray, enabling better accuracy in the segmental test.

## Two IntraMarX<sup>®</sup> Diagnostic Methods

### IntraMarX<sup>®</sup> 3D for the Metcalf (Segmental) Method

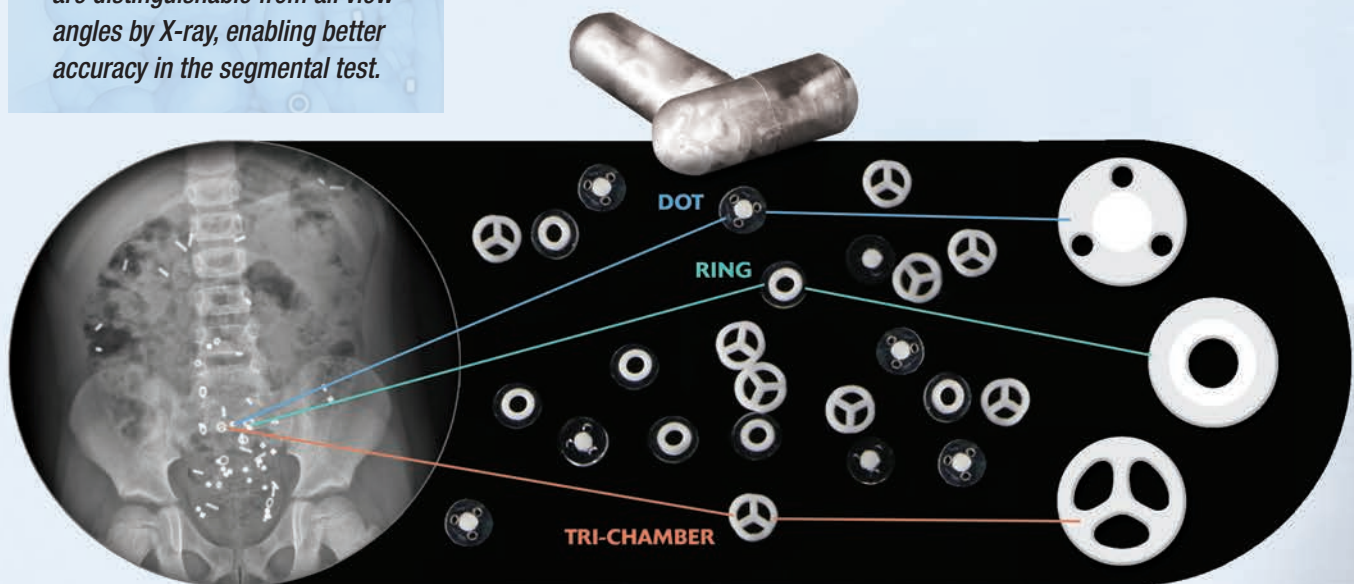
- One **DOT** capsule is ingested on day 1, one **RING** capsule on day 2, and one **TRI-CHAMBER** capsule on day 3. Low-radiation X-ray on days 4 and 7 determine the location and extent of elimination of the various shaped radiopaque markers in the segmental test.

The 3D package contains 3 capsules, one each of Dot, Ring and Tri-chamber, and is packaged with 10 packs of 3.

### Standard IntraMarX<sup>®</sup> for the Simplified Method

- One capsule is ingested on day 1. A low-radiation X-ray on day 6 determines the location and the extent of elimination of the radiopaque markers.

The Standard IntraMarX<sup>®</sup> package contains 10 capsules of either Round Hollow, Double D or Tri-Chamber.



AnX Robotica  
6010 W. Spring Creek Pkwy  
Plano, TX 75024  
855.777.0020 or 469.606.9495  
info@anxrobotics.com

#### About AnX

AnX Robotica was founded in 2019 as an advanced technology medical device company integrating innovative research and development with the mission of providing the medical community with patient-friendly devices for diagnostic and therapeutic applications. AnX Robotica has transformed capsule endoscopy with the introduction of the NaviCam<sup>®</sup> Stomach System, a Magnetically Controlled Capsule Endoscopy (MCCE) System. The NaviCam<sup>®</sup> Stomach System has achieved a medical milestone by enabling a thorough examination of the stomach with a minimally invasive, sedation-free, patient friendly procedure while giving the physician complete control.

**Warnings: IntraMarX<sup>®</sup> 3D are to be dispensed only by physicians to patients for oral intake.**