

Converging Robotics & AI...a new vision of GI diagnostic & therapeutic excellence

NAVICAM[®] SB System

SMALL BOWEL CAPSULE ENDOSCOPY



A Safe and Simple Option for Small Bowel Examination

All small bowel capsule systems are not created equal. Using novel aspherical lens technology, the NaviCam[®] SB System has an image resolution of 640*480, frame rate of 0.5 - 6 FPS and an extended battery life in excess of 16 hours.



NaviCam® Components

Small Bowel Capsule

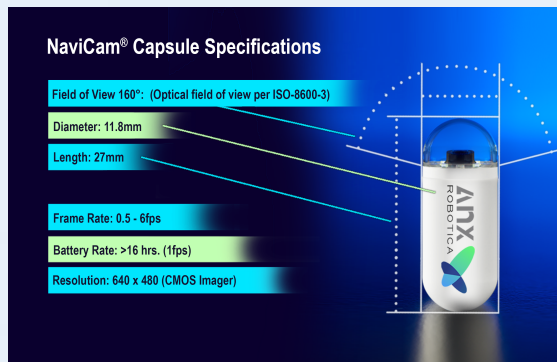
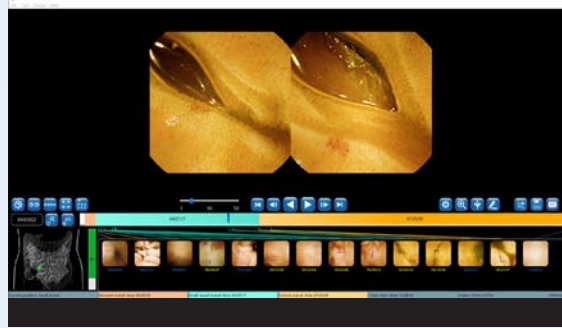
The ingestible capsule is a pill-sized video camera that the patient swallows with water before starting the examination. Inside the capsule, is a tiny camera that has its own light source. It continually captures images of the patient's small bowel.

Data Recorder

The Data Recorder is worn over the patient's clothes for the examination.

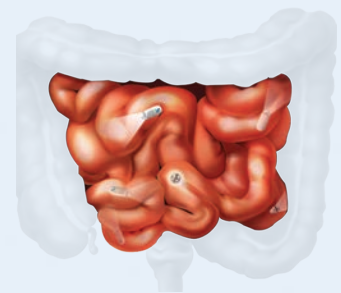


It is used to receive the picture images within the stomach that are captured by the capsule during the examination.



NaviCam® Benefits

- Single Use
- Easy Operation
- High-Resolution Imaging
- Fast download times
- Simultaneous download of up to 4 studies in a little over one hour



Distributed by:
AnX Robotica
6010 W. Spring Creek Pkwy
Plano, TX 75024
855.777.0020 or 469.606.9495
info@anxrobotics.com

NaviCam® Disclaimer

AnX Robotica's NaviCam® software includes optional functionalities and features designed to assist healthcare providers in operating the NaviCam® system.

Providers shall have the sole and exclusive responsibility for operating the NaviCam® software and system and for choosing to use NaviCam's optional functionalities and features. Providers shall operate the NaviCam® software and system in compliance with all applicable federal and state legal requirements and the requirements of all applicable professional licensing boards relating to providers' professional medical services. Providers using the NaviCam® software and system are solely responsible for interpreting data resulting from the use of the NaviCam® software and system and for providing medical services and advice to their patients.

AnX Robotica does not provide medical advice or perform medical services. Providers shall operate the NaviCam® software and system, including any optional functionalities and features, in their sole discretion, using their professional judgment. The NaviCam® software and system is not intended in any way to replace Providers' independent medical review and analysis.

